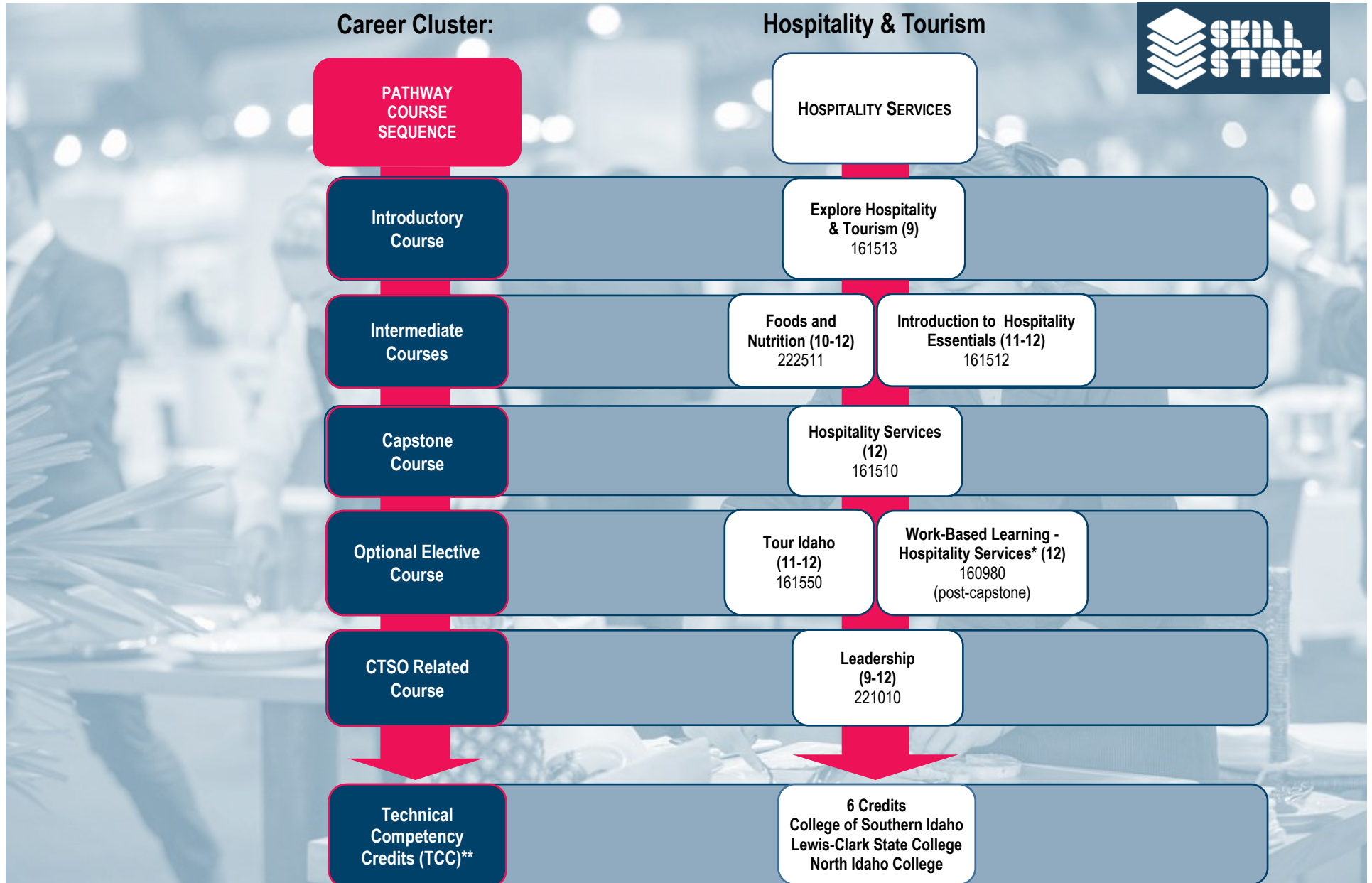


# Idaho Family and Consumer Sciences Education 2021-2022 Hospitality Services Pathway Sequence

A CTE program should include a minimum of three sequential semesters (career technical schools must include a minimum of five semesters) that culminate in the required capstone course.



\* Work-Based Learning (WBL) courses have been established for each CTE Pathway. These work-based learning opportunities are optional, and students may enroll in them during the same term as the capstone course, or in a term following the capstone course.

\*\* Credits can be transcribed at the specified postsecondary institutions.

## Secondary Approved Cluster Courses



### Grades 9-10

160530	Foundational Foods (9)
190014	Introduction to Family and Consumer Sciences (FCS) & Human Services Careers (9)
191540	Explore Working With Young Children (9)
192012	Fashion Strategies (9)
221010	Leadership (9-12)
221520	Strategies for Success (9-10)
222510	Healthy Living, Healthy World (9)
222513	Teen Parenting (9-12)
222515	Teen Living (9-10)

### Grades 10-12

192011	Fashion and Textiles (10-12)
192050	Housing, Interiors, and Furnishings (10-12)
192610	Human Growth and Development (10-12)
221523	Career and Personal Development (10-12)
222080	Family Health and Wellness (10-12)
222514	Parenting and Child Development (10-12)
222517	Personal and Family Finance/Economics (10-12)

### Grades 11-12

160523	Introduction to Culinary Arts (11-12)
160560	International Cuisine (11-12)
190010	Human Services (11-12)
190012	Advanced Human Services (11-12)
191510	Education Assistant (11-12)
191530	Early Childhood Professions (11-12)
192010	Fashion/Design and Merchandising (11-12)
192030	Apparel Construction Fundamentals (11-12)
221522	Family and Consumer Sciences (FCS) Professions (11-12)
222512	Food Science and Nutrition (11-12)
222516	Adult Living (11-12)
222518	Advanced Nutrition and Wellness (11-12)
229984	Entrepreneurship Experience (11-12)

## Program Information

### Approved Assessments:

**CTECS:** Hospitality Services

### Program Standards:

Hospitality Services

### Teaching Endorsements:

- 1085 CTE OS - Hospitality Services (6-12)
- 3023 CTE OS - Food Service (6-12)
- 3025 CTE OS - Culinary Arts (6-12)
- 3027 CTE OS - Culinary Arts (6-12)
- 9971 CTE - Family and Consumer Sciences (6-12)

### Advanced Opportunities: ([www.SDE.idaho.gov](http://www.SDE.idaho.gov))

- AAFCS Pre-PAC (multiple exams)
- ServSafe Food Handler Certification
- ServSafe Manager Certification
- Cardiopulmonary Resuscitation (CPR)
- AHLI Hospitality and Tourism Management Program (workbook and exam)
- Heartsaver First Aid Certification (American Heart Association)

## Middle School Approved Courses

### Grades 6-8

800040	Family and Consumer Sciences & Human Services
Includes:	Exploratory Family and Consumer Sciences (6-7)
	Young Living (8)
	Life and Careers Exploration (7-8)
	Strategies for Success (7-8)



**IDAHO**  
STATE ASSOCIATION

The Idaho Association of Family, Career and Community Leaders of America (**FCCLA**) strives to support positive leadership growth in Idaho's youth. **FCCLA** is unique amongst youth organizations because the program of work is member driven. As a career and technical student organization, **FCCLA** promotes personal growth and leadership development through Family and Consumer Sciences (**FCS**) education. **FCCLA** programs help Idaho students across the state with career preparation and workforce development skills. **FCCLA** and **FCS** help students advance in careers such as human services, hospitality and tourism, education and training, and visual arts and design.

**FCCLA Website:** <https://www.idahofccla.org/>

**State Adviser:** [Theresa Golis](#)

**CTSO Manager:** [Andrew Armstrong](#)

## FCS SkillStack® Badges



TCC - Food Safety and Sanitation



TCC - Introduction to Hospitality Management