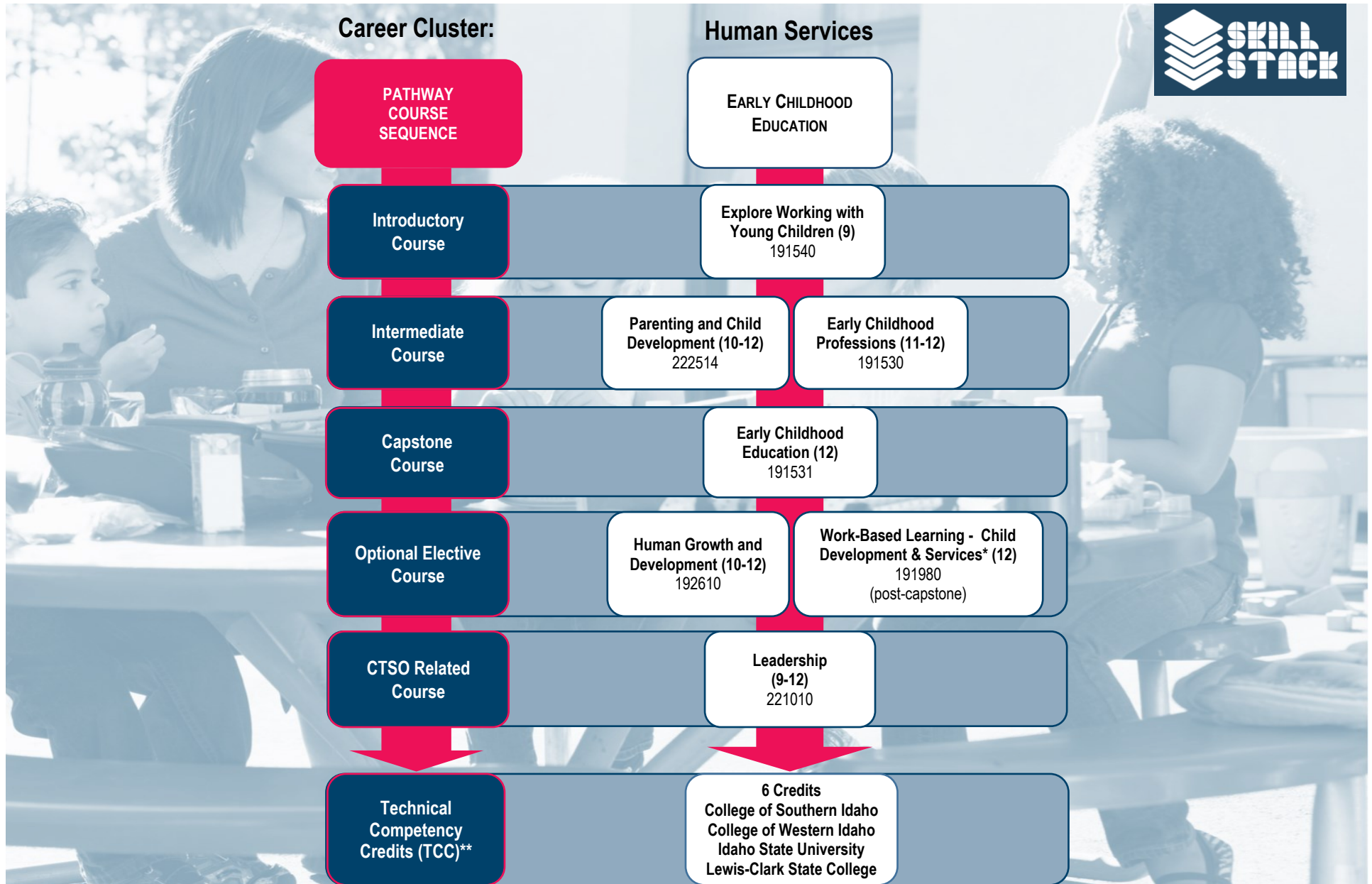


Idaho Family and Consumer Sciences Education 2021-2022

Early Childhood Education Pathway Sequence

A CTE program should include a minimum of three sequential semesters (career technical schools must include a minimum of five semesters) that culminate in the required capstone course.



* Work-Based Learning (WBL) courses have been established for each CTE Pathway. These work-based learning opportunities are optional, and students may enroll in them during the same term as the capstone course, or in a term following the capstone course.

** Credits can be transcribed at the specified postsecondary institutions.

Secondary Approved Cluster Courses (Must align to instructors license)



Grades 9-10

| | |
|--------|---|
| 160530 | Foundational Foods (9) |
| 161513 | Explore Hospitality & Tourism (9) |
| 190014 | Introduction to Family and Consumer Sciences (FCS) & Human Services Careers (9) |
| 192012 | Fashion Strategies (9) |
| 221010 | Leadership (9-12) |
| 221520 | Strategies for Success (9-10) |
| 222510 | Healthy Living, Healthy World (9) |
| 222513 | Teen Parenting (9-12) |
| 222515 | Teen Living (9-10) |

Grades 10-12

| | |
|--------|---|
| 192011 | Fashion and Textiles (10-12) |
| 192050 | Housing, Interiors, and Furnishings (10-12) |
| 192610 | Human Growth and Development (10-12) |
| 221523 | Career and Personal Development (10-12) |
| 222080 | Family Health and Wellness (10-12) |
| 222511 | Foods and Nutrition (10-12) |
| 222517 | Personal and Family Finance/Economics (10-12) |

Grades 11-12

| | |
|--------|--|
| 160560 | International Cuisine (11-12) |
| 161512 | Introduction to Hospitality Essentials (11-12) |
| 161550 | Tour Idaho (11-12) |
| 190010 | Human Services (11-12) |
| 190012 | Advanced Human Services (11-12) |
| 192030 | Apparel Construction Fundamentals (11-12) |
| 221522 | Family and Consumer Sciences (FCS) Professions (11-12) |
| 222512 | Food Science and Nutrition (11-12) |
| 222516 | Adult Living (11-12) |
| 222518 | Advanced Nutrition and Wellness (11-12) |
| 229984 | Entrepreneurship Experience (11-12) |

Program Information

Approved Assessments:

CTECS: Early Childhood Education

Program Standards:

Early Childhood Education

Teaching Endorsements:

- 3020 CTE OS - Child Development Care & Guidance (6-12)
- 3022 CTE OS - Child Development & Services (6-12)
- 9971 CTE - Family and Consumer Sciences (6-12)

Advanced Opportunities: www.SDE.idaho.gov

- AAFCS Pre-PAC (multiple exams)
- Cardiopulmonary Resuscitation (CPR)
- Child Development Associate (CDA)
- Heartsaver First Aid Certification (American Heart Association)

Middle School Approved Courses

Grades 6-8

| | |
|--|---|
| 800040 | Family and Consumer Sciences & Human Services |
| Includes: Exploratory Family and Consumer Sciences (6-7) | |
| Young Living (8) | |
| Life and Careers Exploration (7-8) | |
| Strategies for Success (7-8) | |



IDAHO
STATE ASSOCIATION

The Idaho Association of Family, Career and Community Leaders of America (**FCCLA**) strives to support positive leadership growth in Idaho's youth. **FCCLA** is unique amongst youth organizations because the program of work is member driven. As a career and technical student organization, **FCCLA** promotes personal growth and leadership development through Family and Consumer Sciences (**FCS**) education. **FCCLA** programs help Idaho students across the state with career preparation and workforce development skills. **FCCLA** and **FCS** help students advance in careers such as human services, hospitality and tourism, education and training, and visual arts and design.

FCCLA Website: <https://www.idahofccla.org/>

State Adviser: [Theresa Golis](#)

CTSO Manager: [Andrew Armstrong](#)

FCS SkillStack® Badges



TCC - Introduction to
Early Childhood
Education



TCC - Health, Safety,
& Nutrition