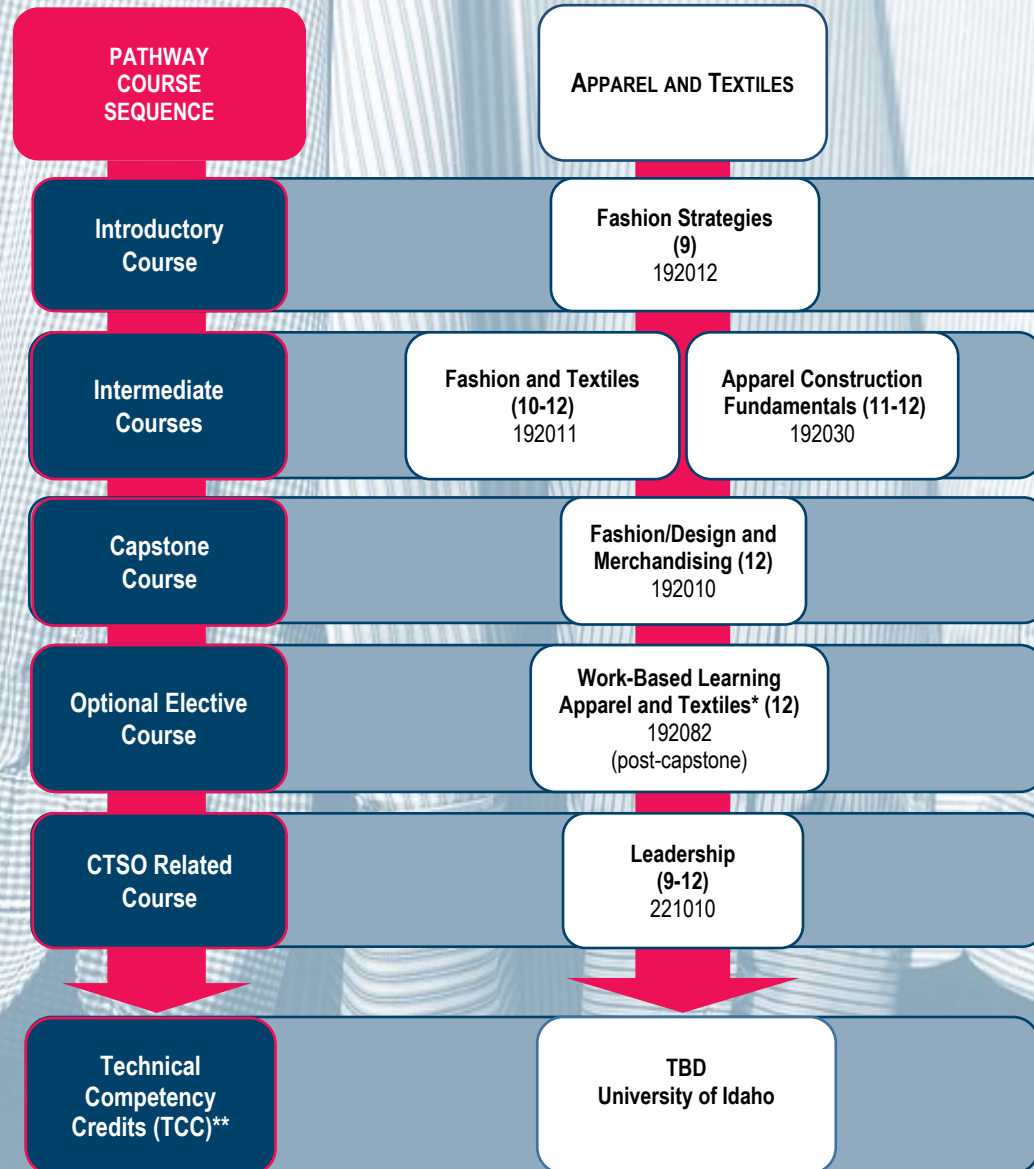


Idaho Family and Consumer Sciences Education 2021-2022 Apparel and Textiles Pathway Sequence

A CTE program should include a minimum of three sequential semesters (career technical schools must include a minimum of five semesters) that culminate in the required capstone course.



Career Cluster: Arts, Audio/Visual Technology & Communication



* Work-Based Learning (WBL) courses have been established for each CTE Pathway. These work-based learning opportunities are optional, and students may enroll in them during the same term as the capstone course, or in a term following the capstone course.

** Credits can be transcribed at the specified postsecondary institutions.

Secondary Approved Cluster Courses (Must align to instructors license)



Grades 9-12

160530	Foundational Foods (9)
161513	Explore Hospitality & Tourism (9)
190014	Introduction to Family and Consumer Sciences (FCS) & Human Services Careers (9)
191540	Explore Working with Young Children (9)
221010	Leadership (9-12)
221520	Strategies for Success (9-10)
222510	Healthy Living, Healthy World (9)
222513	Teen Parenting (9-12)
222515	Teen Living (9-10)

Grades 10-12

192050	Housing, Interiors, and Furnishings (10-12)
192610	Human Growth and Development (10-12)
221523	Career and Personal Development (10-12)
222080	Family Health and Wellness (10-12)
222511	Foods and Nutrition (10-12)
222514	Parenting and Child Development (10-12)
222517	Personal and Family Finance/Economics (10-12)

Grades 11-12

160523	Introduction to Culinary Arts (11-12)
160560	International Cuisine (11-12)
161512	Introduction to Hospitality Essentials (11-12)
161550	Tour Idaho (11-12)
190010	Human Services (11-12)
190012	Advanced Human Services (11-12)
191510	Education Assistant (11-12)
191530	Early Childhood Professions (11-12)
221522	Family and Consumer Sciences (FCS) Professions (11-12)
222512	Food Science and Nutrition (11-12)
222516	Adult Living (11-12)
222518	Advanced Nutrition and Wellness (11-12)
229984	Entrepreneurship Experience (11-12)

Program Information

Approved Assessments:

CTECS: Apparel and Textiles—Pilot—TBD

Program Standards:

Apparel and Textiles

Teaching Endorsements:

- 3030 CTE OS - Apparel/Textiles (6-12)
- 3035 CTE OS - Apparel/Textiles (6-12)
- 9971 CTE - Family and Consumer Sciences (6-12)

Advanced Opportunities: (www.SDE.idaho.gov)

- AAFCS Pre-PAC (multiple exams)
- Cardiopulmonary Resuscitation (CPR)
- Heartsaver First Aid Certification (American Heart Association)

Middle School Approved Courses

Grades 6-8

800040	Family and Consumer Sciences & Human Services
Includes: Exploratory Family and Consumer Sciences (6-7)	
	Young Living (8)
	Life and Careers Exploration (7-8)
	Strategies for Success (7-8)



IDAHO
STATE ASSOCIATION

The Idaho Association of Family, Career and Community Leaders of America (**FCCLA**) strives to support positive leadership growth in Idaho's youth. **FCCLA** is unique amongst youth organizations because the program of work is member driven. As a career and technical student organization, **FCCLA** promotes personal growth and leadership development through Family and Consumer Sciences (**FCS**) education. **FCCLA** programs help Idaho students across the state with career preparation and workforce development skills. **FCCLA** and **FCS** help students advance in careers such as human services, hospitality and tourism, education and training, and visual arts and design.

FCCLA Website: <https://www.idahofccla.org/>

State Adviser: [Theresa Golis](#)

CTSO Manager: [Andrew Armstrong](#)

FCS SkillStack® Badges



Apparel & Textiles