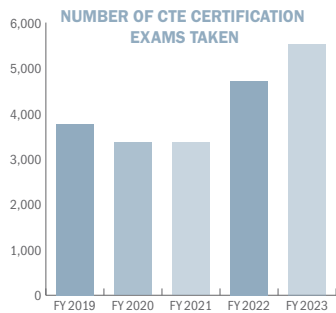
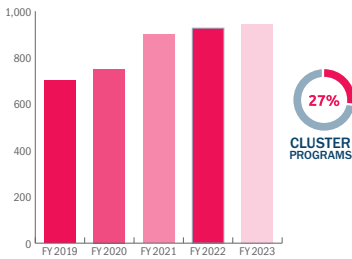


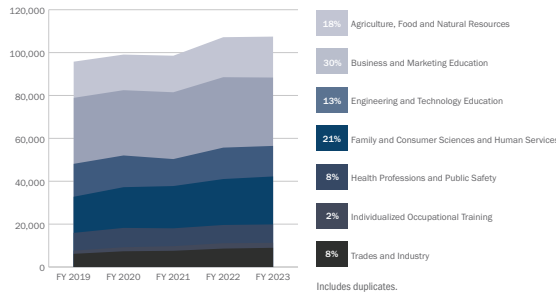
2022 | 2023 Year in Review

secondary

35% ↑
**TOTAL PROGRAMS
OVER FIVE YEARS**



NEARLY 72K
STUDENTS ENROLLED IN CTE PROGRAMS

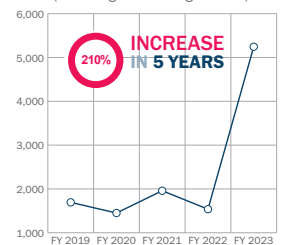


15
CAREER TECHNICAL CENTERS
WITH **20,631**
STUDENTS ENROLLED

71% OF ALL HIGH SCHOOL STUDENTS TAKE CTE COURSES

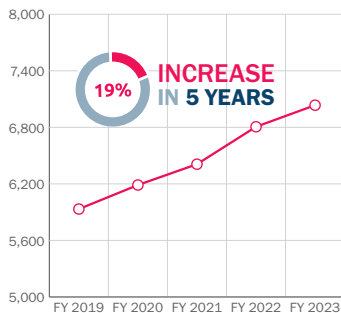
14%
GROWTH IN SECONDARY CTE STUDENTS OVER 5 YEARS COMPARED TO 9% GROWTH STATEWIDE

STUDENTS ENROLLED IN DIGITAL CTE COURSES
(Idaho Digital Learning Alliance)

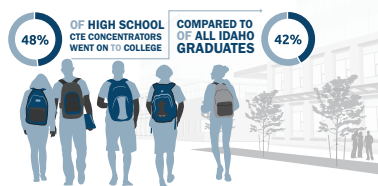
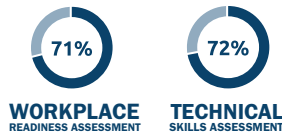


CTE CONCENTRATORS

A **CTE CONCENTRATOR** IS A JUNIOR OR SENIOR IN A CAPSTONE CLASS

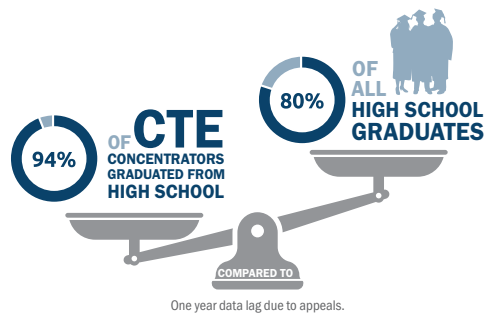


ASSESSMENT PASS RATES



2,394 CTE DIPLOMAS AWARDED AS REPORTED BY LEAs

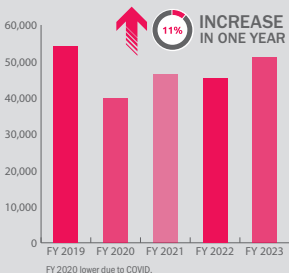
42% INCREASE IN ONE YEAR



95% OF CTE CONCENTRATORS FOUND A JOB, MOVED INTO POSTSECONDARY EDUCATION, OR WENT INTO THE MILITARY

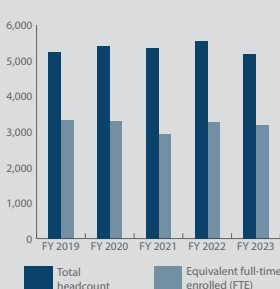
technical college system

WORKFORCE TRAINING CENTERS (WTC)



A FIVE-YEAR AVERAGE OF OVER **47,000** WTC ENROLLMENTS

CERTIFICATE/DEGREE PROGRAMS



95,675
YEAR-END CREDITS

FOUND JOBS, CONTINUED THEIR EDUCATION, OR WENT INTO THE MILITARY

>5,100

STUDENTS ENROLLED AND NEARLY 3,200 FTE

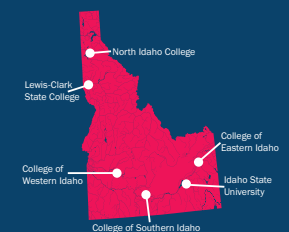
215 ACTIVE PROGRAMS



OBTAINED EMPLOYMENT RELATED TO THEIR CTE TRAINING

4 TECHNICAL COLLEGES at COMMUNITY COLLEGES

2 TECHNICAL COLLEGES at FOUR-YEAR COLLEGES



IDAHO
Division of Career Technical Education

650 W. State St., Suite 324
Boise, Idaho 83702
208-429-5500
cte.idaho.gov