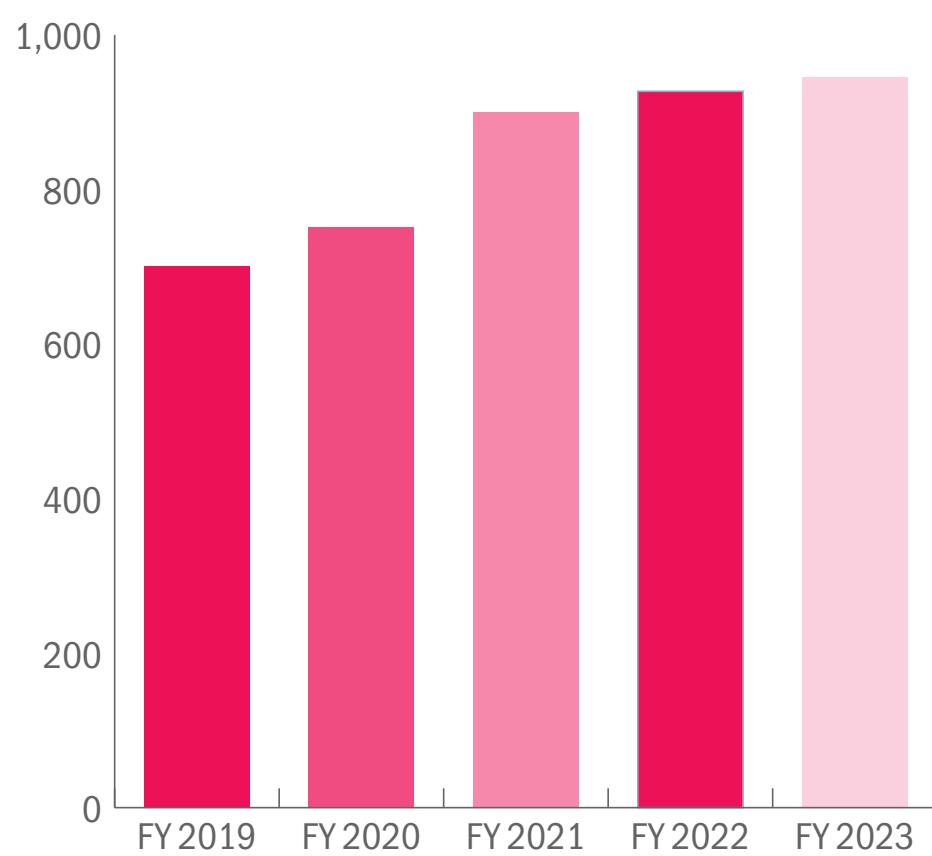


2022 | 2023

Year in Review

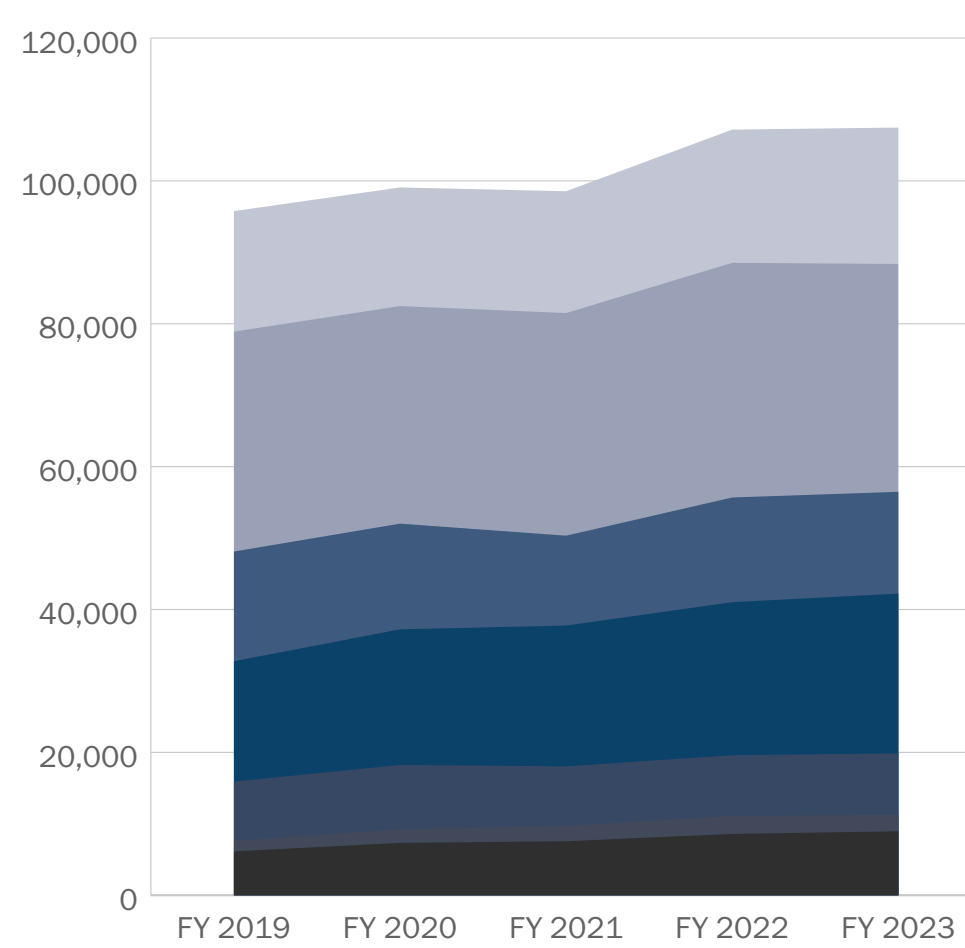
secondary

35% ↑
TOTAL PROGRAMS OVER FIVE YEARS



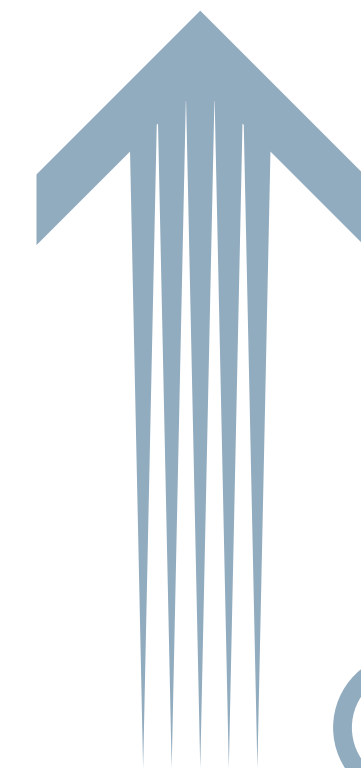
27%
CLUSTER PROGRAMS

NEARLY 72K
STUDENTS ENROLLED IN CTE PROGRAMS

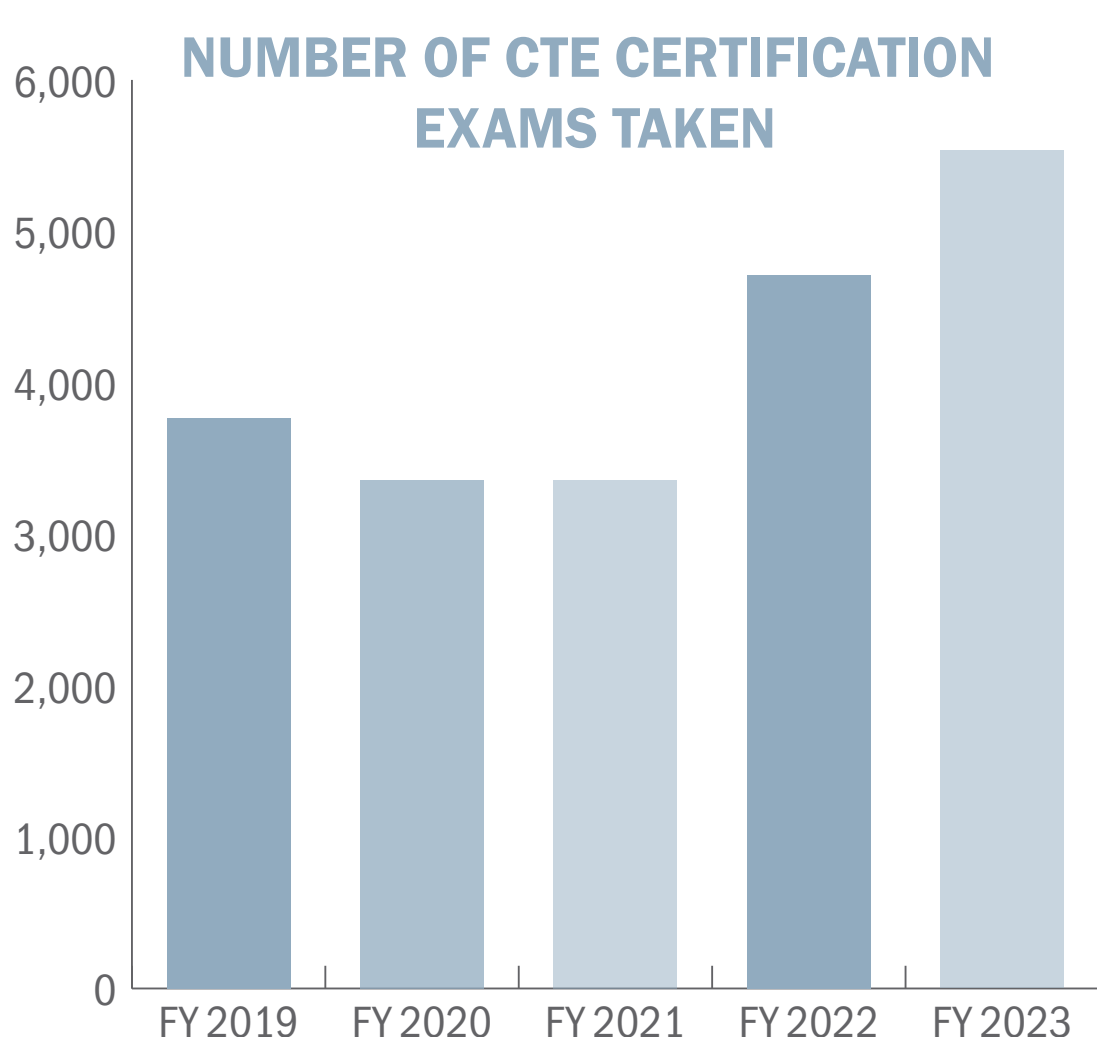


145
LOCAL EDUCATION AGENCIES (LEAs)
72% RURAL

71% OF ALL HIGH SCHOOL STUDENTS TAKE CTE COURSES

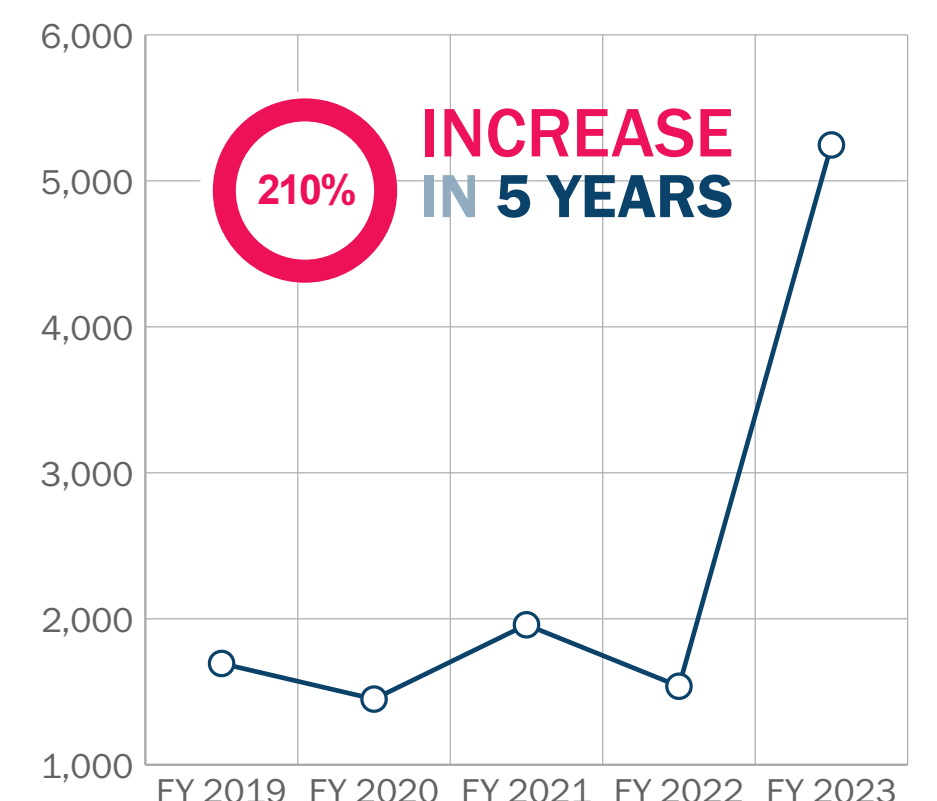


14%
GROWTH IN SECONDARY CTE STUDENTS OVER 5 YEARS COMPARED TO STATEWIDE
9%



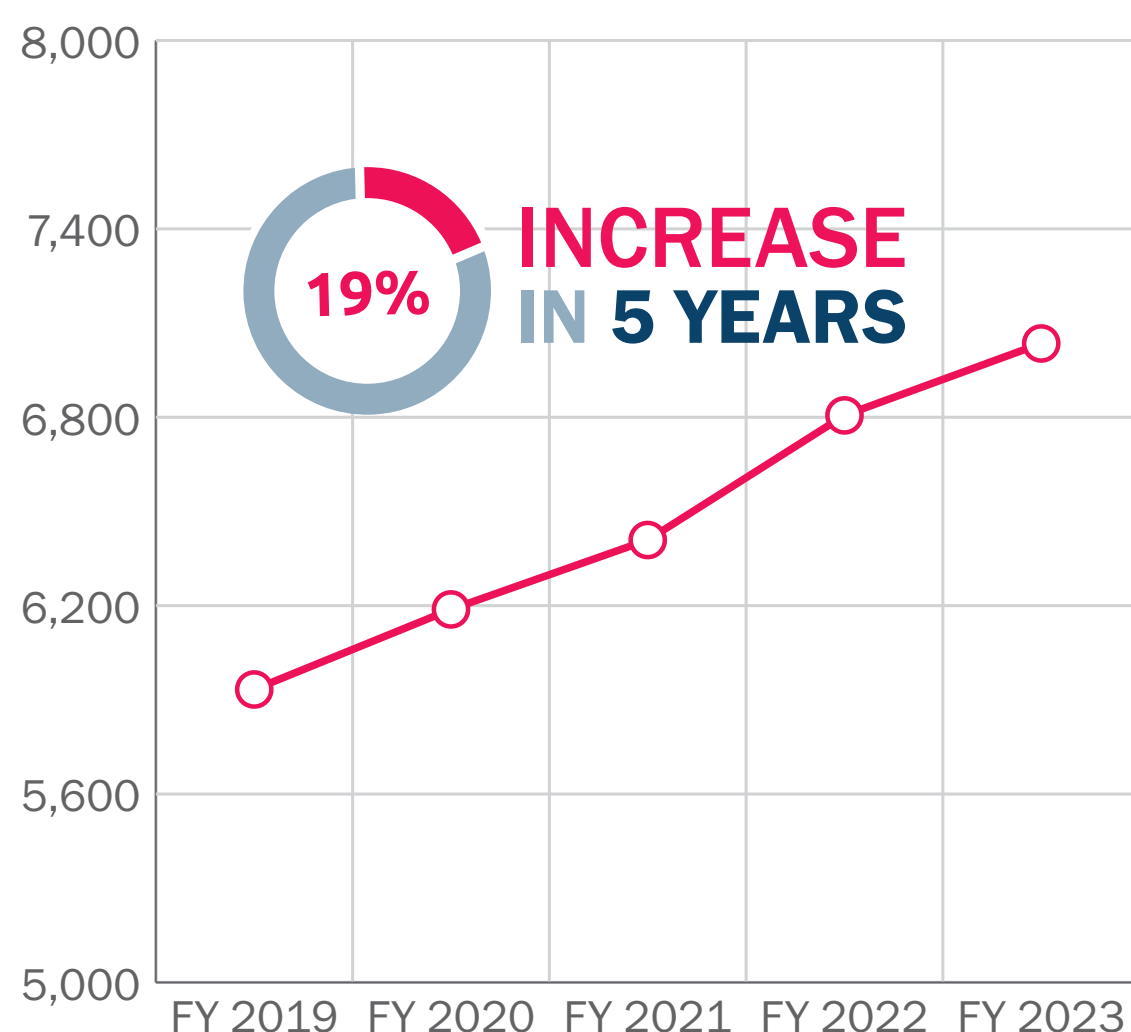
15 CAREER TECHNICAL CENTERS WITH **20,631** STUDENTS ENROLLED

STUDENTS ENROLLED IN DIGITAL CTE COURSES
(Idaho Digital Learning Alliance)



CTE CONCENTRATORS

A **CTE CONCENTRATOR** IS A JUNIOR OR SENIOR IN A **CAPSTONE CLASS**



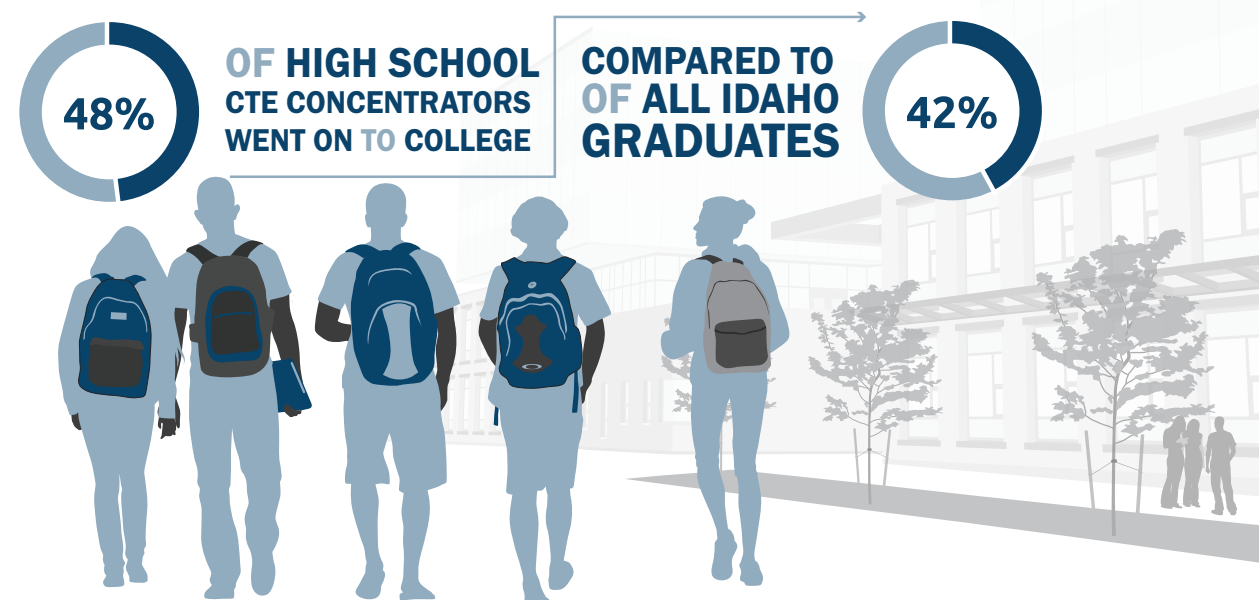
ASSESSMENT PASS RATES

71%

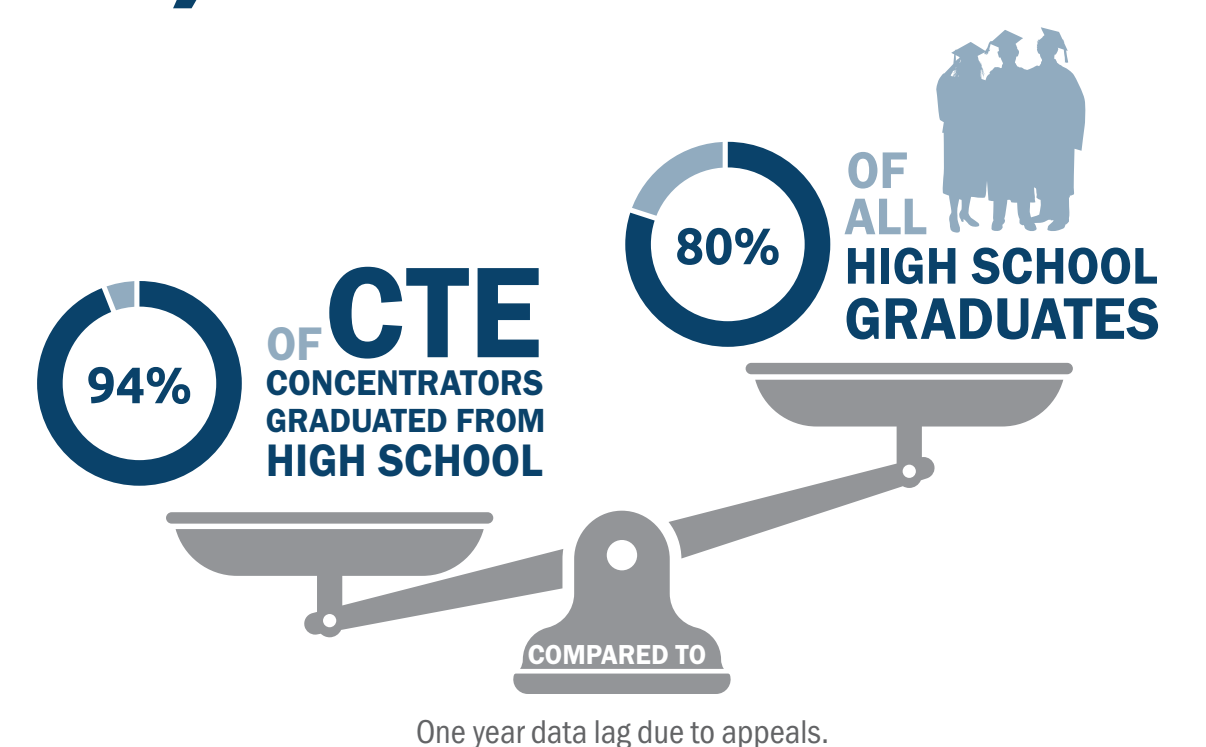
WORKPLACE READINESS ASSESSMENT

72%

TECHNICAL SKILLS ASSESSMENT



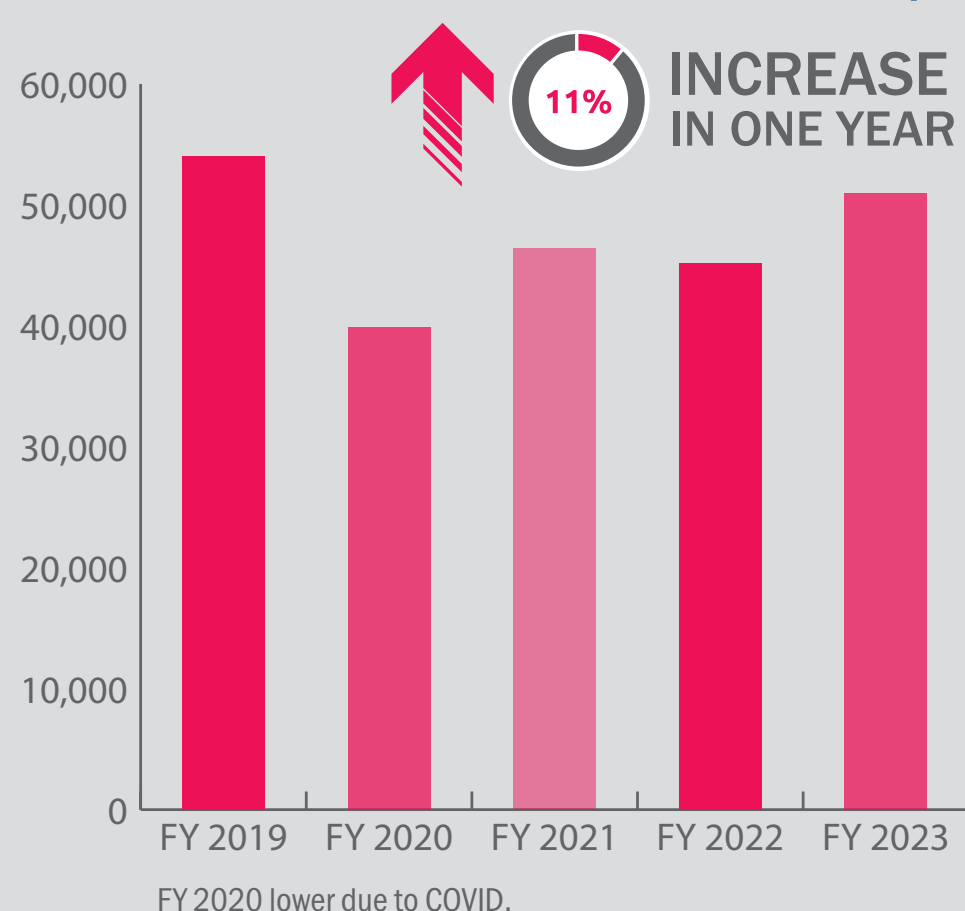
2,394 CTE DIPLOMAS AWARDED AS REPORTED BY LEAs
42% INCREASE IN ONE YEAR



95% OF CTE CONCENTRATORS FOUND A JOB, MOVED INTO POSTSECONDARY EDUCATION, OR WENT INTO THE MILITARY

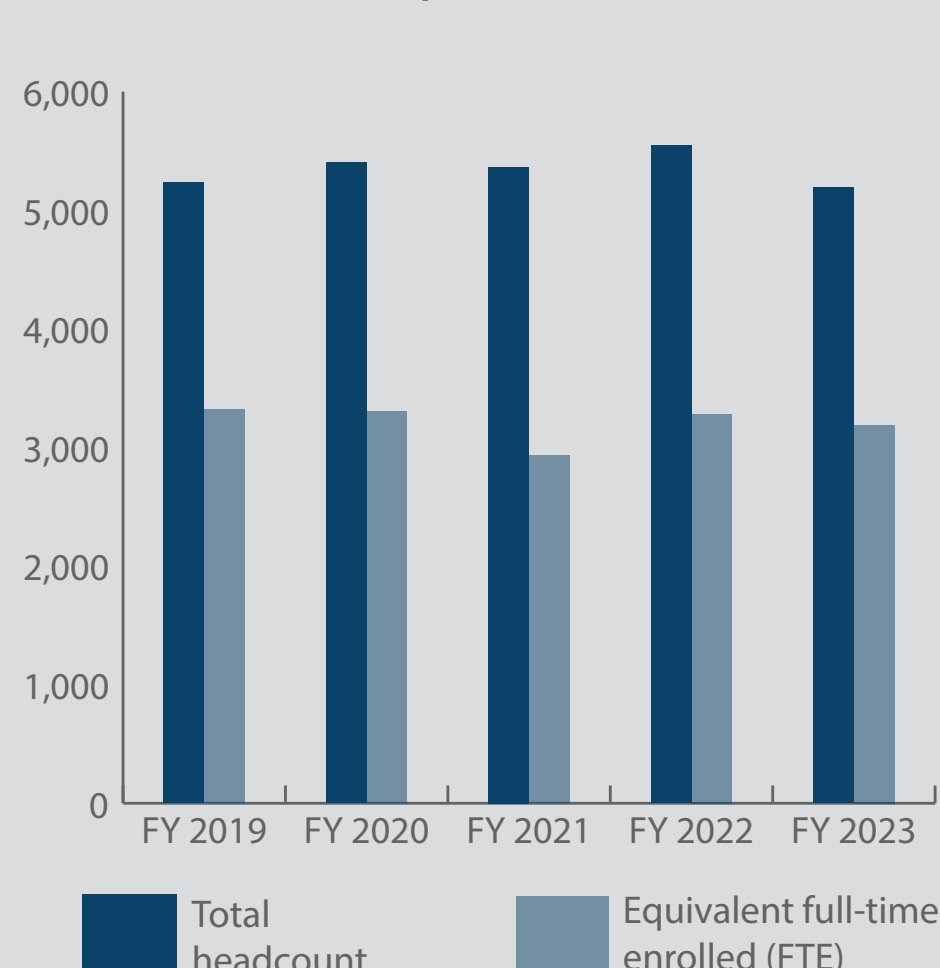
technical college system

WORKFORCE TRAINING CENTERS (WTC)



A FIVE-YEAR AVERAGE OF OVER **47,000** WTC ENROLLMENTS

CERTIFICATE/DEGREE PROGRAMS



>5,100 STUDENTS ENROLLED AND NEARLY 3,200 FTE

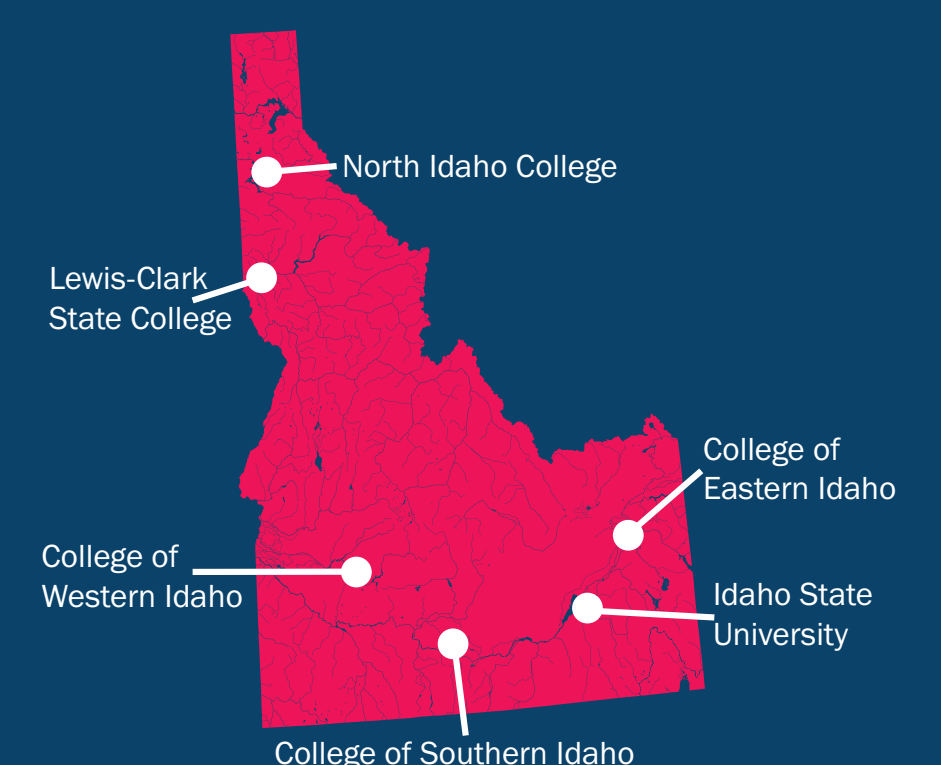
215 ACTIVE PROGRAMS

95,675 YEAR-END CREDITS

1,708 STUDENTS AWARDED CERTIFICATES AND DEGREES
2% INCREASE IN FIVE YEARS

4 TECHNICAL COLLEGES at COMMUNITY COLLEGES

2 TECHNICAL COLLEGES at FOUR-YEAR COLLEGES



93% OF TECHNICAL COLLEGE COMPLETERS FOUND JOBS, CONTINUED THEIR EDUCATION, OR WENT INTO THE MILITARY

71% OBTAINED EMPLOYMENT RELATED TO THEIR CTE TRAINING



650 W. State St., Suite 324
Boise, Idaho 83702
208-429-5500
cte.idaho.gov